

FIXING INSTRUCTIONS KOZ STC RANGE

CONFIGURATION: CENTER HOLE INSTALLATION

Recommended torque moment: 5-8 Nm

Clamp Assembly Components:

2x Threaded rods | 2x Washers | 6x Nuts | 1x Sliding nut & 1x Hex bolt (fix on rail) | 1x Cable cleat

Installation notes:

- To ensure a safe and guaranteed installation, apply force evenly
- In general apply force until you feel a slight resistance

Compatible with KOZ® STC-series cable clamp types:

STC 21-38 | STC 36-52 | STC 46-75 | STC 72-100 | STC 100-130 | STC 120-160

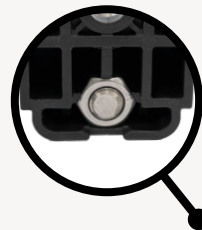
1

Threaded rods configuration

Place the threaded rods in the bottom part using the nuts.

Recommended torque: 5-8 Nm.

4x

**2**

C-profile / Rail configuration

Place and secure the bottom part of the cable cleat on the rail using the hex bolt and sliding nut in the center hole.

Recommended torque: 5-8 Nm.

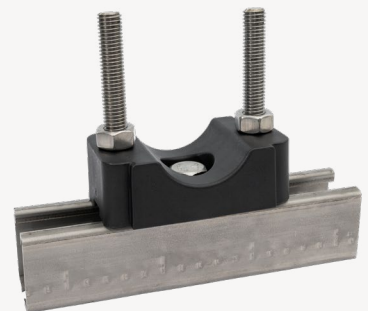
1x



1x



1x

**3**

Upper part

Place the cables accordingly unto the bottom part. Position the upper part over the cables and secure with washers and nuts.

Recommended torque: 5-8 Nm.

2x



2x

