

# FIXING INSTRUCTIONS KOZ UNI 3X 30-49 ONE LAYER

## CONFIGURATION: C-PROFILE / RAIL INSTALLATION

**Recommended torque moment: 5-8 Nm**

### Clamp Assembly Components:

2x Threaded rods | 4x Washers | 4x Nuts | 2x Sliding nuts | 2x Cable cleats

### Installation notes:

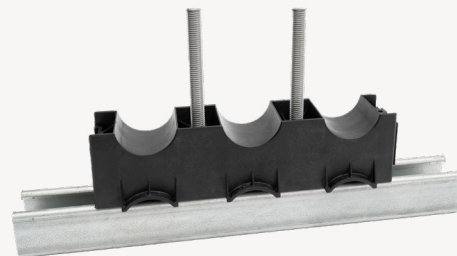
- To ensure a safe and guaranteed installation, apply force evenly
- In general apply force until you feel a slight resistance

**1**

#### C-profile / Rail configuration

Place the first part on top of the rail using the sliding nuts and threaded rods.

2x

**2**

#### First part

Secure the first part of the cable cleat using washers and nuts. Place the cables accordingly unto the first part. Recommended torque: 5-8 Nm.

2x



2x

**3**

#### Second part

Position the second part over the cables and secure with washers and nuts. Recommended torque: 5-8 Nm.

2x



2x

